



HUDSON TERRACE

Hudson Terrace, with its magnificent urban vista, is an unparalleled entertainment destination. Discreetly tucked at the edge of midtown along the Hudson River, this spectacular haven of serene opulence offers unforgettable venue amenities.

The Hudson Terrace event venue imaginatively unites intimate interiors with all-season exterior spaces. Erected from imported heirloom woods, handcrafted tiles and treasured stone, the venue promises nothing short of uncompromised artistry.

A canopied entrance into the vaulted lobby leads directly to the 2nd floor receiving gallery. Once there, guests are beckoned through a towering archway into the luminous main Salon. Imbued with rich, antique jewel tones reminiscent of Vermeer and accessorized with tapestry and tooled leather, The Salon pays homage to the great visualists of Northern Europe. While the texture is old world inspired, technology is hard wired and wireless. Above The Salon floor, 2 one-of-a-kind video monitor chandeliers embellished with fifty thousand Swarovski crystals deliver state-of-the-art intelligent broadcasting.

Adjacent to The Salon, and just a few steps down, rests a walled garden oasis. Here you may indulge in private tranquility, shielded by blue Atlas Cedars, Vanerwolf Pines and an undergrowth of seasonal enchantment.

One flight up, accessible by elevator or red-carpeted stairway, Hudson Terrace defies convention with a breathtaking, all-season rooftop lounge built atop temperature-regulated mahogany flooring. It is a dreamy scene, where Japanese willows, eccentric evergreens and walls of wisteria guard the glass-sided cabanas situated along the roof's perimeter. Up here, even the most jaded world-traveler can be seduced by the sweeping views and pleasure of lounging al fresco in New York City.

OVERVIEW



HUDSON TERRACE

The Salon

Situated on the second floor of Hudson Terrace, The Salon is a mélange of old and new. Hand-hewed wooden beams from vintage vessels were reclaimed to construct the streamlined edges of this modern venue. The Salon is enabled with state-of-the-art broadcast quality video, audio and lighting capabilities. Hudson Terrace was designed to deliver dreams. The flow can accommodate a myriad of floor plan configurations, transforming 5,000 square feet into a night club, a classic catered ballroom setting for up to 400 guests, or an intimate lunch gathering.



RECEIVING GALLERY WITH COAT CHECK AND STORAGE • SECURE, SOUND-PROOF VIP/BRIDAL SUITE WITH PRIVATE BATHROOM • LOUNGE/BAR SEATING FOR 250 PPL
STANDING 400 PPL • SEATED DINING FOR 130 PPL • ENABLED WITH STATE-OF-THE-ART AUDIO, LIGHTING AND VIDEO TECHNOLOGY FOR RECORDED AND LIVE PERFORMANCES
ONE-OF-A-KIND SUSPENDED VIDEO DISPLAY CHANDELIERS EMBELLISHED WITH SWAROVSKI CRYSTALS
ELEVATED STAGE • DJ BOOTH • PRIVATE, ADJACENT GARDEN
CLIMATE CONTROLLED • HANDICAP ACCESSIBLE • WC LOUNGE • FULL STOCK BAR
SIGNATURE COCKTAILS • CUSTOMIZED CATERING MENUS

Garden Terrace

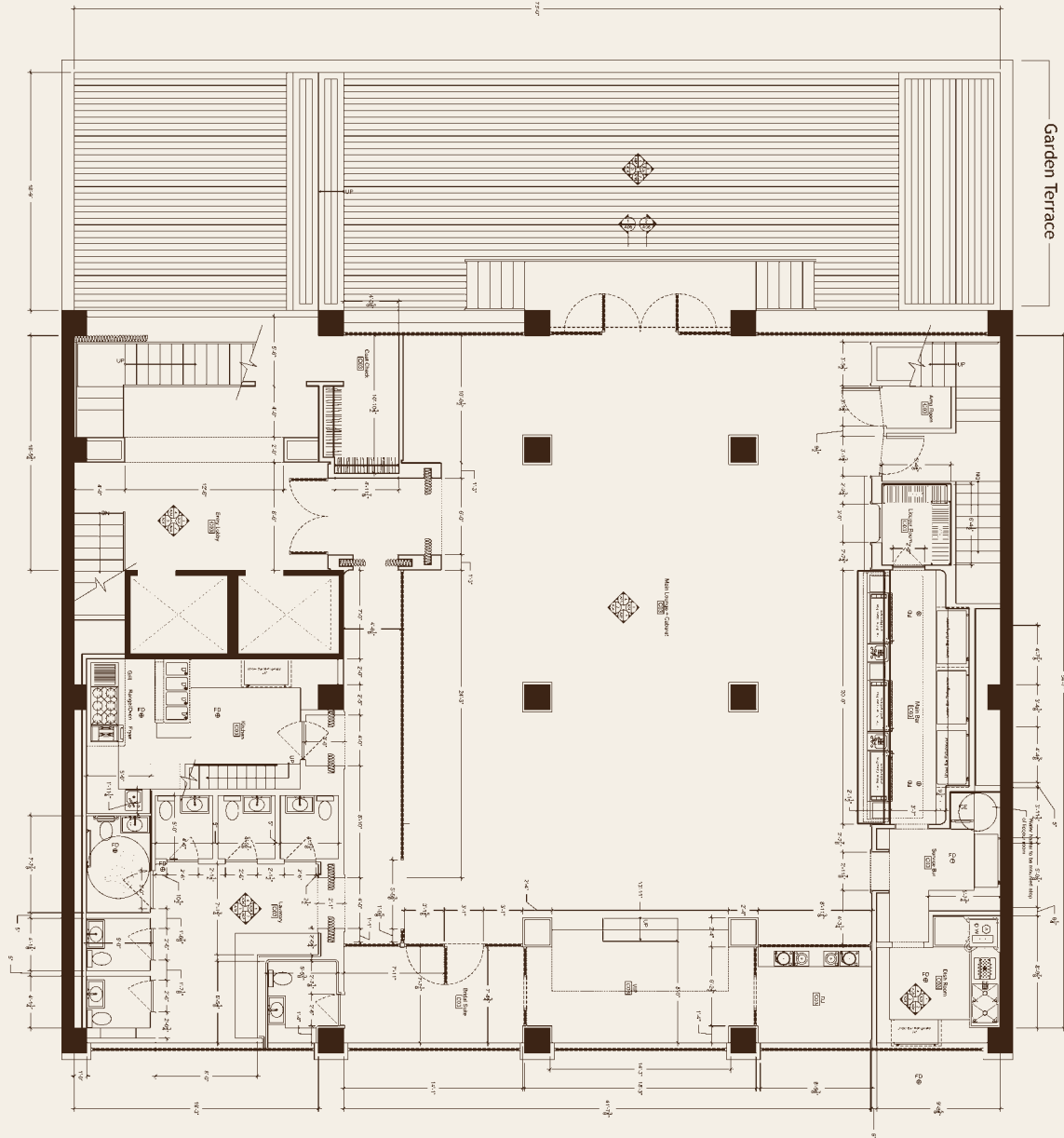
The outdoor Garden Terrace is an ideal location for parties of up to 150 guests. The private garden on The Salon level is ideal for hosting brunch, outdoor meetings or moonlit dinner parties.



RECEIVING GALLERY WITH COAT CHECK AND STORAGE • LOUNGE/BAR SEATING FOR 70 PPL
STANDING 150 PPL • PERFORMANCE GRADE AUDIO, LIGHTING AND VIDEO CAPABILITIES • WC LOUNGE
FULL STOCK BAR ON REQUEST • SIGNATURE COCKTAILS • CUSTOMIZED CATERING MENUS

THE SALON & GARDEN TERRACE

The Salon & Garden Terrace Floorplan



HUDSON TERRACE



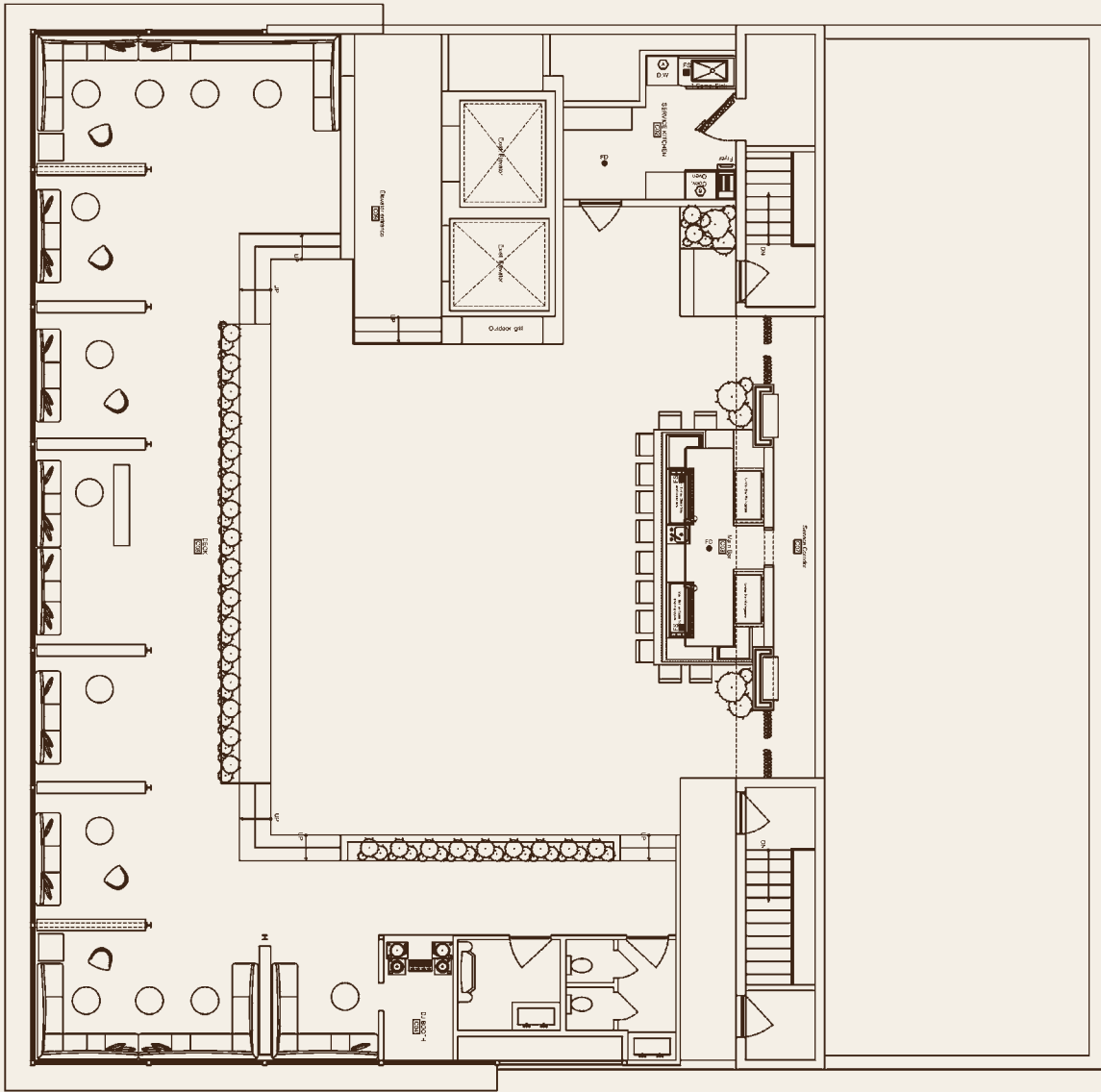
Inspired by Palm Springs modern, our open-air Rooftop Garden Lounge is the ultimate urban all-season rooftop venue. Complete with a DJ booth, centralized fireplace and conversation area, the lounge is set upon temperature-regulated mahogany flooring. The rooftop amenities include surround sound, programmable lighting and large projection screening capabilities. Glass enclosed, curtained cabanas are augmented with individually controlled heat and cooling units. The Rooftop Garden Lounge is serviced directly from a rooftop kitchen. Customized catering menus are available for parties of up to 300 guests.



DIRECT ELEVATOR ACCESS FROM LOBBY • LOUNGE/BAR SEATING FOR 100 PPL • STANDING 300 PPL
SEATED DINING FOR 180 PPL • DJ BOOTH • AUDIO, LIGHTING AND VIDEO TECHNOLOGY FOR PERFORMANCES
THEATRICAL SIZE PROJECTION SURFACE FOR NIGHT SCREENINGS • CLIMATE CONTROLLED HANDICAP
ACCESSIBLE • WC LOUNGE • FULL STOCK BAR • SIGNATURE COCKTAILS • CUSTOMIZED CATERING MENUS

ROOFTOP GARDEN LOUNGE

Rooftop Garden Lounge Floorplan



HUDSON TERRACE

The A/V System at Hudson Terrace is unmatched in terms of quality and configurability. Utilizing components from Danley Sound Labs, Biamp, Crest, Chauvet, and Elektralite, this unique system was designed by Steve Petrik—Danley Sound Labs' premier designer for club installations in the USA.

Combining Danley Sound Labs' TH-112 for low frequency and SH-100B for the mid/high section, this system produces one of the warmest musical sounds in NYC. The Salon and Roof Lounge DJ booths boast two SH-100B speakers for monitoring. Each DJ console features an installed Rane Serato unit with a USB connection built into the console. The sound design allows users to route audio from either DJ console to any one of the three discreet areas located within the venue. All connections to the system are made through two of the Allen & Heath Xone:S2 installation mixers.

Two spectacular 9x9' LED Video chandeliers, ideal for visual branding and environmental effects, hang above the Salon floor. Each Chauvet DV module HR is draped with thousands of Swarovski Crystals and washed with Chauvet LED color splash 196-fixtures. Color strip lighting embedded around the perimeter of the Salon, further enhances the walls with color illuminations. Recessed into the ceiling to minimize sight lines, Intimidator HTI moving head fixtures can be modified for customized messaging with tailored gobos available from the in-house design team. The Salon comes equipped with an HD movie projector and retractable, 120" display for big-screen viewing. The venue's lighting and video system is controlled from a CP20xt located in the Salon level DJ booth.

AUDIO/VISUAL OVERVIEW

Tech Specs

SPEAKERS:

DANLEY SOUND LABS
SH-100B FULL RANGE (10)
SH-100 FULL RANGE (8)
TH-112 SUBWOOFERS (6)
TH-MINI SUBWOOFERS (2)

CREST AMPLIFICATION:

PRO 8200 (8)
PRO 7200 (2)

BIAMP PROCESSING:

NEXIA SP PROCESSORS (3)
ROUTABLE SOUND TO ANY ONE OF THREE ZONES FROM EITHER DJ BOOTHS
CUSTOM DAVINCI INTERFACE FOR SYSTEM CONTROL AT MANAGER STATION

TWO FULLY EQUIPPED DJ BOOTHS:

TECHNICS TURNTABLE (2)
PIONEER CDJS (2)
INSTALLED RANE SERATO INTERFACES (2)
ALLEN & HEATH XONE:S2 DJ MIXER (2)
CUSTOM DJ CONSOLES

LIGHTING SYSTEM:

CP20 XT LIGHTING BOARD (1)
CHAUVET DMX-44 CONTROLLER (1)
CHAUVET DMX SPLITERS (1)
CHAUVET INTIMIDATOR2 HTI MOVING HEAD LUMINARS (12)
CHAUVET COLOR SPLASH 196 LEDS (8)
CHAUVET COLOR STRIP LEDS (41)

VIDEO SYSTEM:

DV MODULE HR PANELS (16)
DV WALL STUDIO (1)
DV WALL DRIVER (2)
PC FOR VIDEO PROCESSING (1)
SANYO PLV-Z2000 PROJECTOR (1)
120" DALITE CONTROL ELECTROL ELECTRIC SCREEN

HUDSON TERRACE



ROOFTOP GARDEN LOUNGE AT NIGHT



ROOFTOP LOUNGE DAYTIME



THE SALON INTERIOR



THE SALON INTERIOR

IMAGES